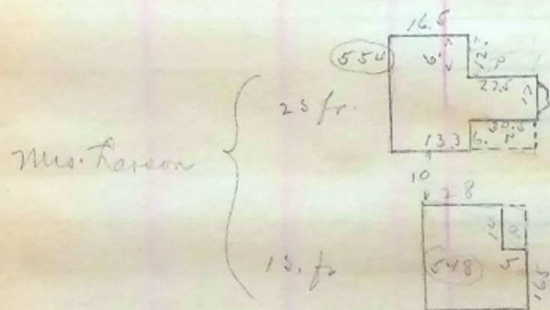


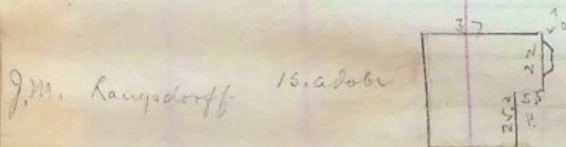
JEFFERSON

AVENUE

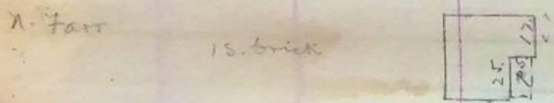
Mt. Vernon on  
 27th continued to  
 Madison Ave on  
 Page 16-



114+80  
 112+40 58.5  
 113+40 73



111+40 61.5  
 111+40



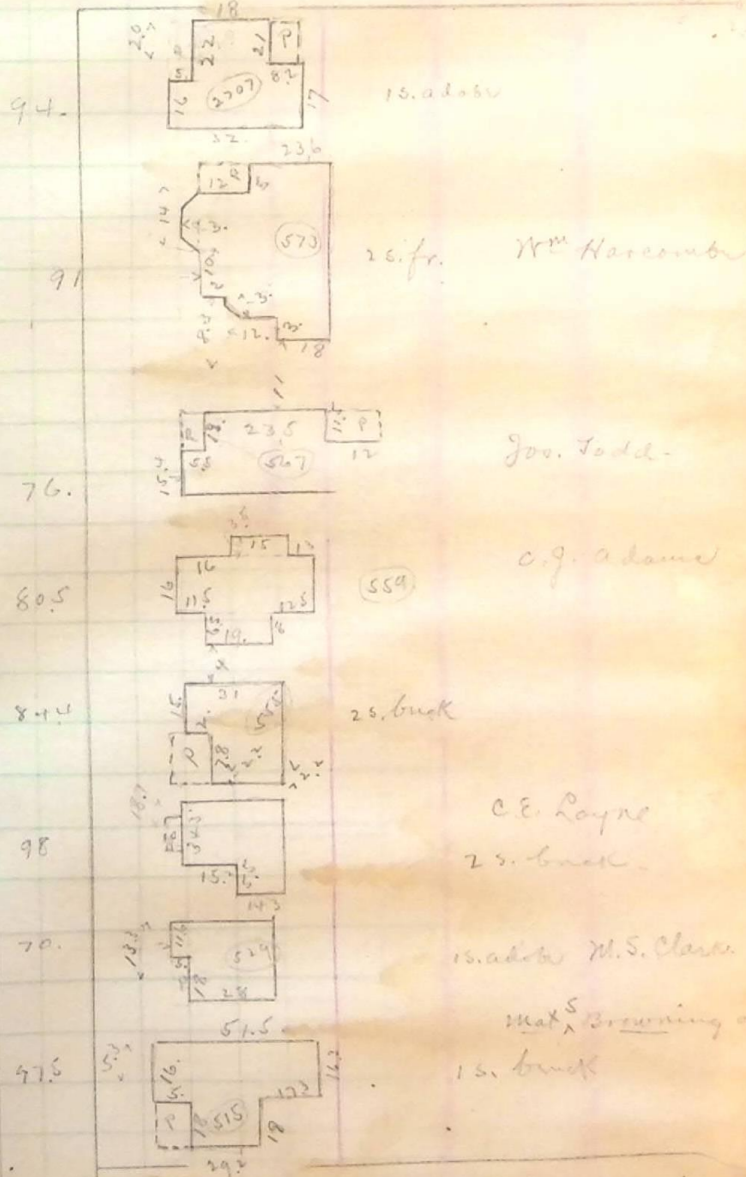
112+40 88.5  
 110+50 111+40



110+50 71  
 109+50 109+50

old shell frame + adobe

ADAMS



15. adobe 94.  
 26. fr. Wm. Harcomb 91.  
 76. Joe. Todd.  
 80.5 C.G. Adams  
 8+4 25. brick  
 98 C.E. Payne 25. brick  
 70. 15. adobe M.S. Clark  
 47.5 Max S. Browning on 15. brick

AVENUE